



9th NLPGA

Conference & Exhibition

Panel Session: Mobilizing Funding for Growth

Presented By

Engr. Simbi K. Wabote

**EXECUTIVE SECRETARY,
NIGERIAN CONTENT DEVELOPMENT & MONITORING BOARD**

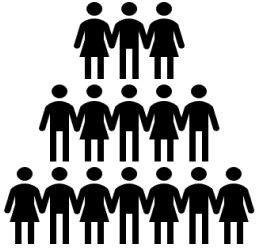
November 2019

December 3, 2019

(c) Copyright of NCDMB

www.ncdmb.gov.ng

Data



Population

• **200mln**



Households

>20mln



LPG Penetration

5%



Gas Reserves:

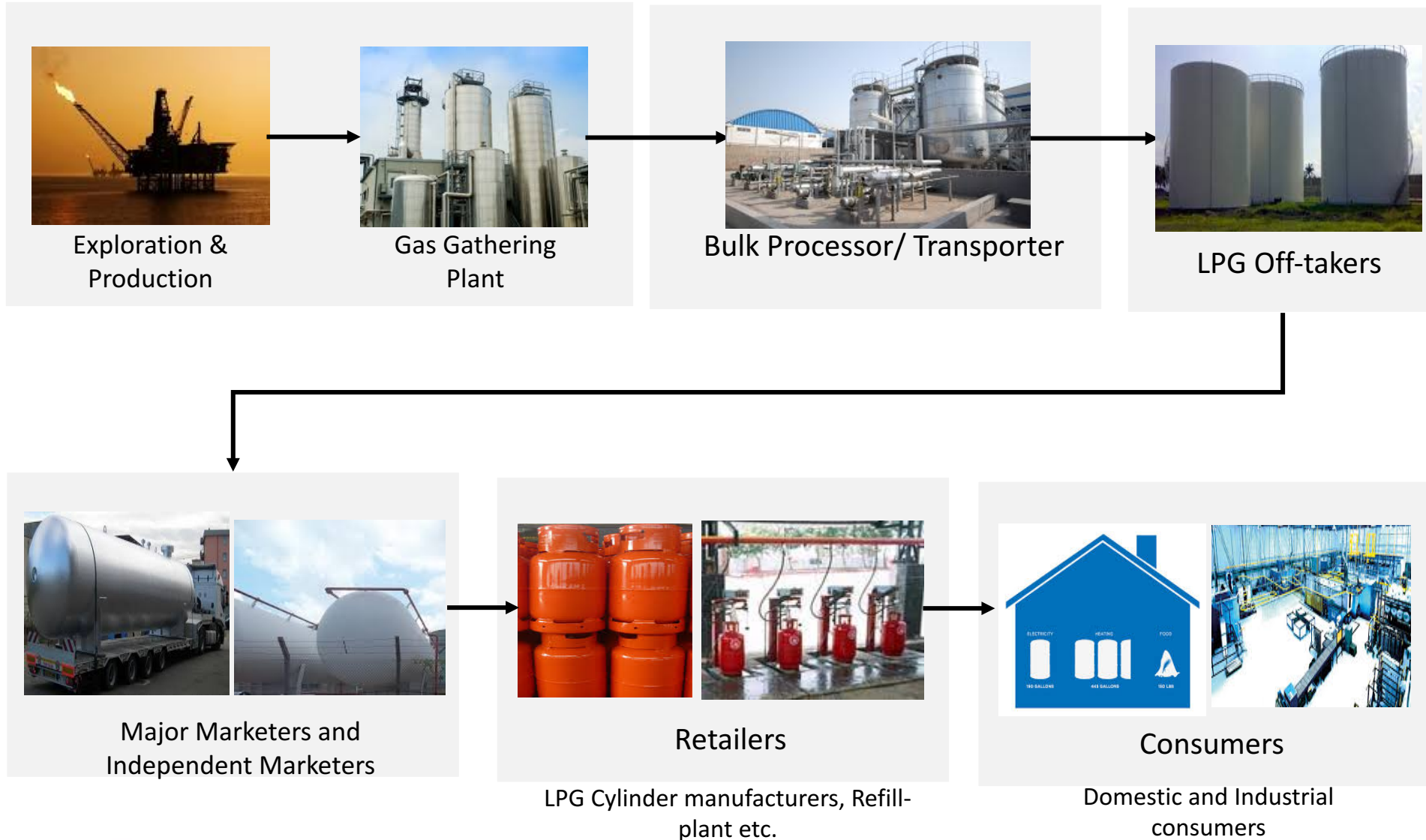
>180tcf

LPG Consumption:

2kg per Capita

TIME FOR ACTION!

Investment Policy: LPG Value Chain



Partnerships secured



400,000

LPG Cylinders
per annum



Polaku,
Bayelsa State

168,000

MT

LPG Terminal

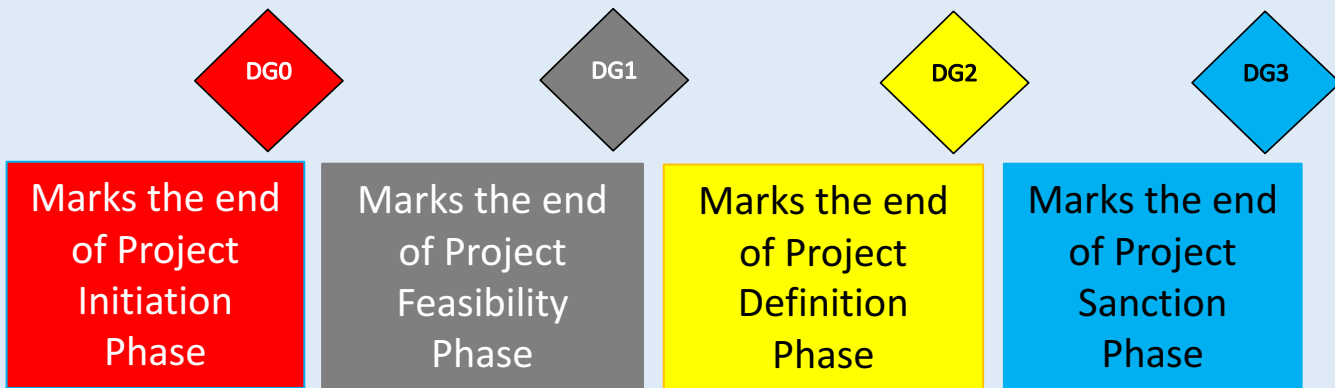


Koko,
Delta State

Multi-Level Review to Funding



Decision Gates: the end of a phase at which the Decision Executive supported by other members decides whether to stop, hold, recycle or proceed,



FUNDING ROUTES:

1

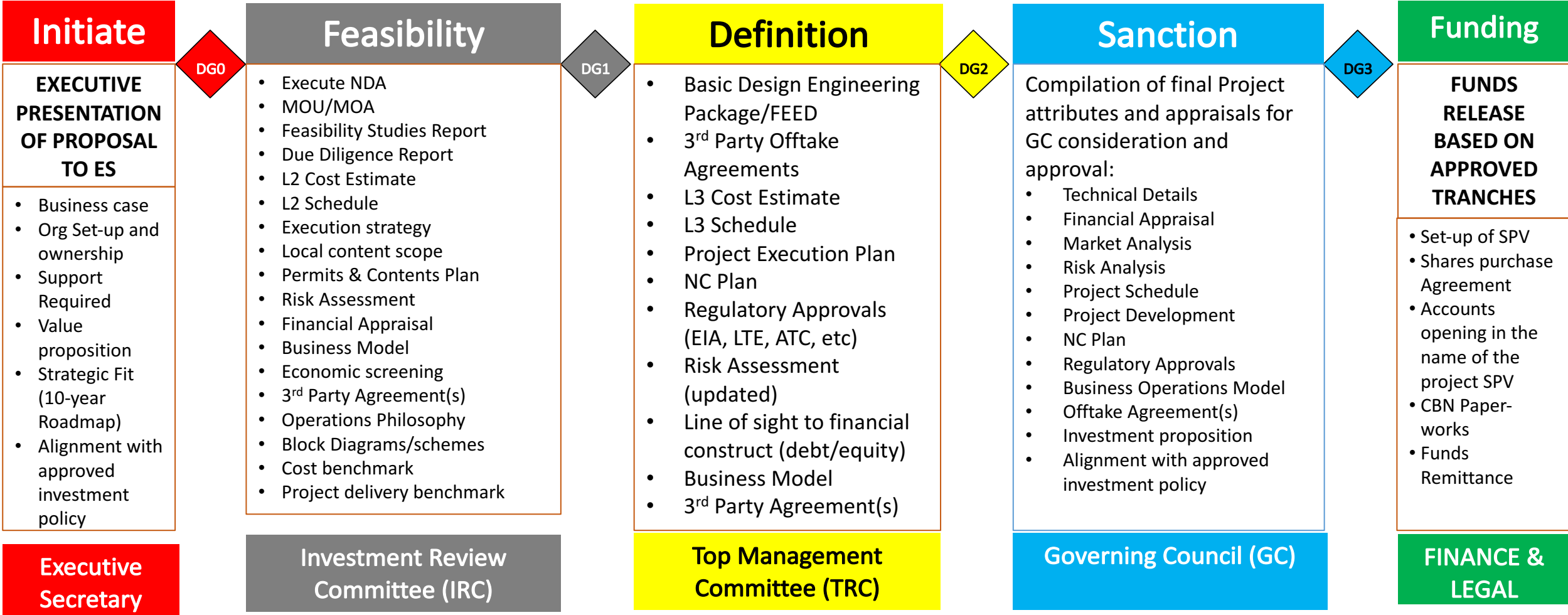
Equity

2

NCIFund

... or both

Partnership Requirements



Our Promise



We will support at least three credible proposals





Thank You for Listening

	<i>Contact us</i>	
	info@ncdmb.gov.ng	
	@officialncdmb	
	@officialncdmb	
	www.facebook.com/officialncdmb	
	officialncdmb	
	070000ncdmb	